



**PT. MEGAH KARYA TIKA PRATAMA**

SCAN ME



Visit Our Official Website

# *We Provide Best Construction*

**TRUSTED • DEDICATED • INNOVATED**

**DESIGN & BUILD | GENERAL CONTRACTOR | ENGINEERING**



# About Us



**Megah Karya Tika Pratama** is a national private company from Indonesia, with decades of experience in the construction industry. Since our establishment on **May 25, 1990**, based on **Notarial Deed No. 113 by Notary F. Eka Sumarningsih, SH**, our company has remained committed to delivering the best results in every project we undertake.

As part of our growth efforts and adaptation to the evolving business world, the company's deed was amended on **March 24, 2003**, through **Deed No. 45 by Notary Roekiyanto, SH**, and **officially ratified** by the **Ministry of Justice and Human Rights of the Republic of Indonesia** on **April 7, 2003**, through **Decree No. C-07422HT.01.01.TH.2003**.

With a strong foundation built on the values of **integrity, professionalism, and a spirit of nationalism**, Megah Karya Tika Pratama continues to contribute to Indonesia's development by **providing high-quality and reliable construction services across the country**.

Sincerely,  
**Megah Karya Tika Pratama**





*"The changes and challenges within the business world drive us to continually innovate, adapt, and deliver excellent construction solutions."*

Ir. REISKA HENDRIYANTO, S.T., M.H., IPM

President Director

PT. Megah Karya Tika Pratama

# *President Director Remarks*

Assalamu'alaikum warahmatullahi wabarakatuh,  
Greeting to us all,

With gratitude and pride, on behalf of the entire management and the extended family of Megah Karya Tika Pratama, I express our thanks for the trust and support given by all our partners, clients, and stakeholders throughout our long journey in the national construction industry.

Since its establishment in 1990, Megah Karya Tika Pratama has grown into a solid and trusted construction company, founded on integrity, professionalism, and a spirit of nationalism.

We believe that success is not only measured by project achievements but also by our tangible contributions to the development and progress of Indonesia.

Changes and challenges in the business world motivate us to continuously innovate, adapt, and provide superior construction solutions.

Through our competent human resources and commitment to quality, we always strive to be a strategic partner in infrastructure development across the nation.

We have compiled this company profile as a reflection of our commitment, values, and achievements, as well as a guide for our journey ahead. It is our hope that Megah Karya Tika Pratama can continue to grow with the nation and provide sustainable benefits.

Finally, we thank you for your attention and trust. Let's work together to build a better future for Indonesia.

Wassalamu'alaikum warahmatullahi wabarakatuh,

Best regards,

**Ir. REISKA HENDRIANTO, S.T.,M.H., IPM**

*President Director*

**PT. Megah Karya Tika Pratama**



# Organizational Chart of Megah Group



**CONTRACTOR DIVISION**  
Contractor Division

**DISTRIBUTION DIVISION**  
Distributor Division

**HOSPITALITY DIVISION**  
Hospitality Division

**F&B DIVISION**  
FnB Division

PT. MEGAH KARYA TIKA PRATAMA

PT. SUKSES MANDIRI CONTRACTOR

CV. REFFA PUTERA MANDIRI

PT. ANZAERARA SOEBOER GROUP

MEGAH GROUP LAND

TRELLION CAPITAL

MEGAH GREENCARANI

CV. KEMA NUSANTARA

MK PRIME SYARIAH

CV. SOEBOER RESTORAN NUSANTARA

ROTI KOKI

SAUDI FRIED CHICKEN

MEGAH BOGA

# Company Profile

Company Name : PT. MEGAH KARYA TIKA PRATAMA

Address : Jl. Srikaton Timur I, Kav. 235-236, Purwoyoso, Ngaliyan, Semarang, Central Java

Mailing Address : Jl. Srikaton Timur I, Kav. 235-236, Purwoyoso, Ngaliyan, Semarang, Central Java

Telephone : (024) 7623792

Fax : (024) 7623792

Whatsapp : (+62) 812-2836-5545

E-mail : info@megahgroup.id

Website : www.megahgroup.id

## LEGAL BASIS OF COMPANY ESTABLISHMENT

### DEED OF ESTABLISHMENT

Number : 113  
Date : 25 May 1990  
Notary : Ny. F. Eka Sumarningsih, SH

### LATEST DEED OF AMENDMENT

Number : 02  
Date : 19 December 2024  
Notary : Febrika Rizki Andini, S.H., M.Kn.

## BUSINESS PERMITS

### BUSINESS IDENTIFICATION NUMBER (NIB)

Number : 8120116261479  
Issuert : Minister of Investment and Downstreaming - Head of the Investment Coordinating Board

### CONSTRUCTION BUSINESS ENTITY CERTIFICATE (SBU)

PB-UMKU : 812011626147900020001  
(Office Building Construction – BG002 – Medium-Sized classification)

PB-UMKU : 812011626147900030001  
(Industrial Building Construction – BG003 – Medium-Sized classification)

PB-UMKU : 812011626147900040002  
(Shopping Center Construction – BG004 – Medium-Sized classification)

PB-UMKU : 8120116261479000240001  
(Educational Building Construction – BG006 – Large-Sized Classification)

PB-UMKU : 812011626147900090001  
(Other Building Construction – BG009 – Medium-Sized classification)

PB-UMKU : 8120116261479000290001  
(Civil Road Construction – BS001 – Large-Sized Classification)

PB-UMKU : 812011626147900019  
(Water Resources Infrastructure Buildings – BS010 – Medium-Sized classification)

# Company Profile

## MANAGEMENT CERTIFICATE

Quality Management Certificate	: ISO 9001:2015
HSE (K3) Management Certificate	: ISO 45001:2018
Environmental Management Certificate	: ISO 14001:2015

## OTHER CERTIFICATES

BIM (Building Information Modelling)	: ISO 19650-1:2018
Anti-Bribery Management System Certificate	: ISO 37001:2016

## TAX

Taxpayer Identification Number (NPWP)	: 01.496.906.7-503.000
Taxable Entrepreneur Confirmation (PKP)	: S-165/PKP/KPP.100303/2023
Registered Certificate (SKT)	: S-2262KT/WPJ.10/KP.0303/2017





# *Company Vision & Mission*



## ***VISION :***

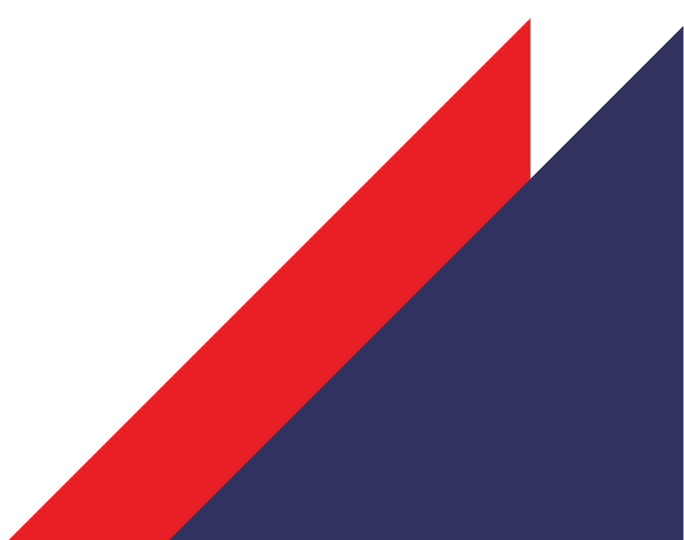
To become a symbol of national pride in the construction industry, a company that not only builds infrastructure but also shapes the future of Indonesia through high-quality, high-integrity, and impactful works.



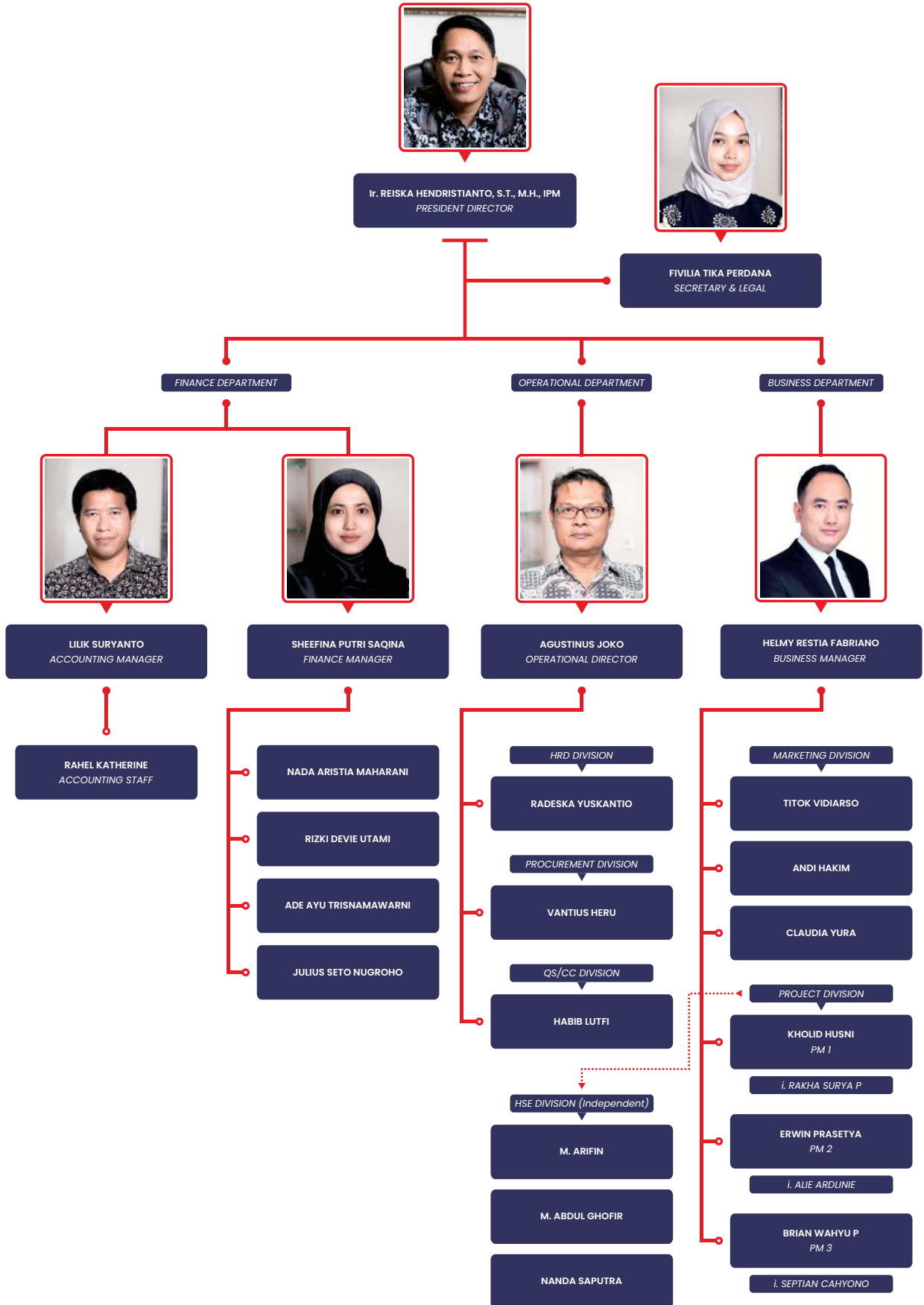
# *Company Vision & Mission*



## ***MISSION:***

1. To deliver superior and high-value construction works through the best quality standards, continuous innovation, and timely and efficient project execution.
  2. To build long-term trust with all clients, partners, and stakeholders through professional work ethics, transparency, and an uncompromising commitment to quality.
  3. To develop the nation's top talents by creating a work environment that fosters growth, technical expertise, and a sense of national pride in every individual.
  4. To integrate technology and sustainability into every work process to produce adaptive, environmentally friendly, and relevant construction solutions for the modern era.
  5. To actively contribute to Indonesia's development by making every project a part of the nation's social, economic, and civilizational progress.
- 

# Organizational Structure Chart





# Strategy

## **1. Strengthening Project Management Systems**

Implementing measurable standard operating procedures (SOP) at every project stage, from planning, procurement, and execution to supervision, to ensure quality, timeliness, and cost efficiency.

## **2. Developing HR Competence**

Conducting regular technical and managerial training, as well as encouraging professional certification for employees to enhance the team's competitiveness and professionalism.

## **3. Digital Transformation of Business Processes**

Implementing technologies such as BIM (Building Information Modeling), ERP systems, and digital reporting applications to facilitate coordination, improve data accuracy, and accelerate decision-making.

## **4. Expanding Networks and Project**

Collaborating with various strategic partners and actively participating in tenders throughout Indonesia.

## **5. Commitment to OHS and the Environment**

Making Occupational Health & Safety (OHS) and environmentally friendly principles a part of the work culture to ensure long-term operational sustainability and company reputation.



# Company Policy



## 1. QUALITY POLICY

**QUALITY POLICY** Megah Karya Tika Pratama is committed to delivering high-quality construction results that are timely and meet applicable technical standards and regulations, based on the following principles

- Focusing on **customer satisfaction** through effective communication and excellent service.
- Implementing a sustainable quality management system in accordance with **ISO 9001 standards**.
- Involving all employees in consistent quality improvement efforts.
- Conducting **continuous evaluation and improvement** of work processes and project outcomes.

## 2. OHS POLICY

**Megah Karya Tika Pratama** recognizes that OHS is a critical part of operational success. 52 Therefore, the company is committed to:

- Creating and maintaining a safe and healthy work environment for all employees and related parties.
- Preventing work-related accidents, occupational diseases, and other hazardous conditions. 54
- Complying with all relevant OHS laws and regulations, as well as applicable industry standards.
- Providing regular OHS training and fostering a culture of safe work behavior at all levels.

## 3. OHS TARGETS

To support the OHS policy, the company sets the following targets:

- **Zero accident** in all ongoing projects.
- **100% compliance with the use of PPE** (Personal Protective Equipment) by all workers.
- **Conducting OHS socialization and training** at least once per project.
- Gradually reducing the level of potential work hazards through a routine inspection program.

## 4. ENVIRONMENTAL POLICY

As part of our social responsibility and commitment to sustainability, **PT. Megah Karya Tika Pratama** establishes the following environmental policy:

- **Preventing environmental pollution and reducing the negative impacts of construction activities** on nature.
  - Managing construction waste wisely in accordance with legal provisions.
  - Optimizing the efficient use of resources such as water, energy, and materials.
  - Supporting the use of **environmentally friendly materials** and the application of green construction principles.
  - Conducting regular monitoring and evaluation of the environmental aspects of each project.
- 



*Portofolio PT. MKTP*

# **INFRASTRUCTURE**



An aerial photograph showing a coastal area. In the foreground, there is a curved breakwater or shoreline made of dark, irregular stones. To the left of the breakwater, there is a sandy area with some sparse vegetation and a small, shallow, yellowish pond. The rest of the image is dominated by a large body of water, likely a bay or a large river, extending to the horizon under a clear sky.

## *Construction and Completion of Shore Protection in Kendal Industrial Park*

*Start* : 12 May 2023  
*End* : 11 November 2023  
*Location* : Kawasan Industri Kendal  
*Client* : PT. Kawasan Industri Kendal  
*Value* : estimated around US\$ 1.000.000  
and still progressing

Its main function is to prevent or reduce coastal erosion caused by waves, currents, and tides. It also protects the infrastructure in the Kendal Industrial Park (KIK) area from damage caused by extreme weather and seawater abrasion.





## *Installation Work for Pipeline Segment 2B*

Start : October 2024  
End : July 2024  
Location : Batang - Cirebon - Kandang Haur Timur  
Client : Ministry of Energy and Mineral Resources  
Value : estimated around US\$ 1.050.000  
and still progressing

Integrated Design and Build Construction of the Cirebon - Semarang Natural Gas Transmission Pipeline, Phase 2 (Batang-Cirebon-Kandang Haur Timur Section).





OPPO A38 - @g@ex  
2025/03/07 12:20



## *Tower Project*

*Location : Klaten Regency, Central Java*

*Client : PT Telekomunikasi Infrastruktur Indonesia*

*Value : estimated around US\$ 750.000*

We have completed the construction of a multi-story tower that serves as a telecommunications facility and supporting infrastructure for the area. This project reflects our commitment to quality construction, on-time completion, and high safety standards in every stage of the work.





*Portofolio PT. MKTP*  
**BUILDING**

# Construction of Production Area and Supporting Facilities for PT. Agrinesia Raya

Start : 26 June 2023  
End : 2 February 2024  
Location : Jl. Garuda Cupuwatu 1, Kabupaten Sleman, DIY  
Client : PT. Agrinesia Raya  
Value : US\$ 2.662.702

Construction of the main buildings, consisting of a production facility, warehouse, and office for PT. Agrinesia Raya in Sleman Regency, Special Region of Yogyakarta.



# Rosalia Indah Rest Area KM-319B

**Start** : 11 November 2021  
**End** : 27 February 2023  
**Location** : Pemalang – Batang Toll Road Section,  
KM-319B, Comal, Pemalang Regency  
**Client** : PT. Rosalia Indah Mitra Sentosa  
**Value** : estimated around US\$ 8.550.000

A rest area located on the Trans-Java Toll Road at KM 319B. The development of this rest area includes various public facilities such as restaurants, a mosque, a parking area, a gas station (SPBU), a center for MSMEs (Micro, Small, and Medium Enterprises), and infrastructure.







MAIN RESTO EXECUTIVE



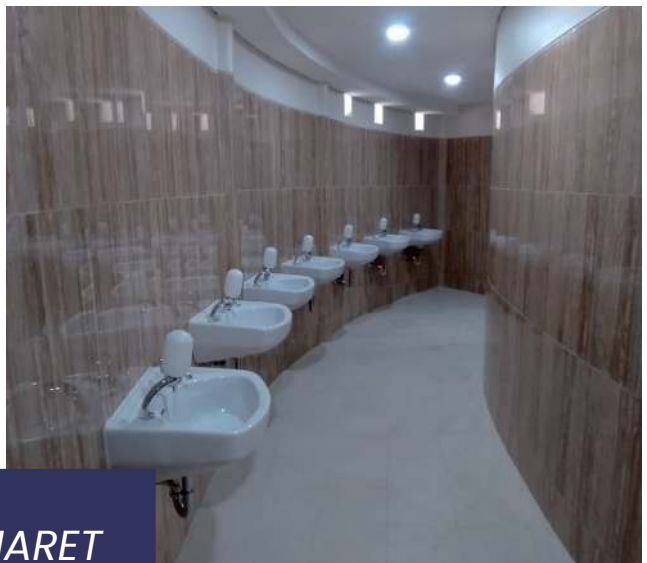
UMKM BUS



RETAINING WALL



*ROAD & DRAINAGE*



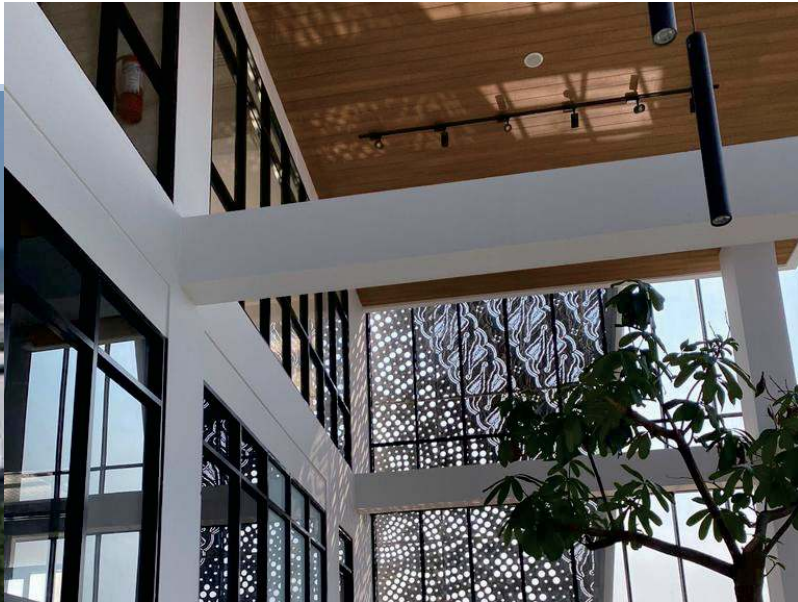
MOSQUE, ABLUTION AREA & MINARET



*ANCHORE RESTO & UMKM A B*



STAFF QUARTERS



## *Apparel One Indonesia Development Center Building*

*Start* : 19 November 2021  
*End* : 30 August 2022  
*Location* : Industrial Area Wijaya Kusuma  
Semarang  
*Client* : PT. Apparel One Indonesia  
*Value* : estimated around US\$ 2.000.000

The Apparel One Indonesia Development Center in Semarang functions as a center for research and product development, product prototype production, as well as training and production coordination.



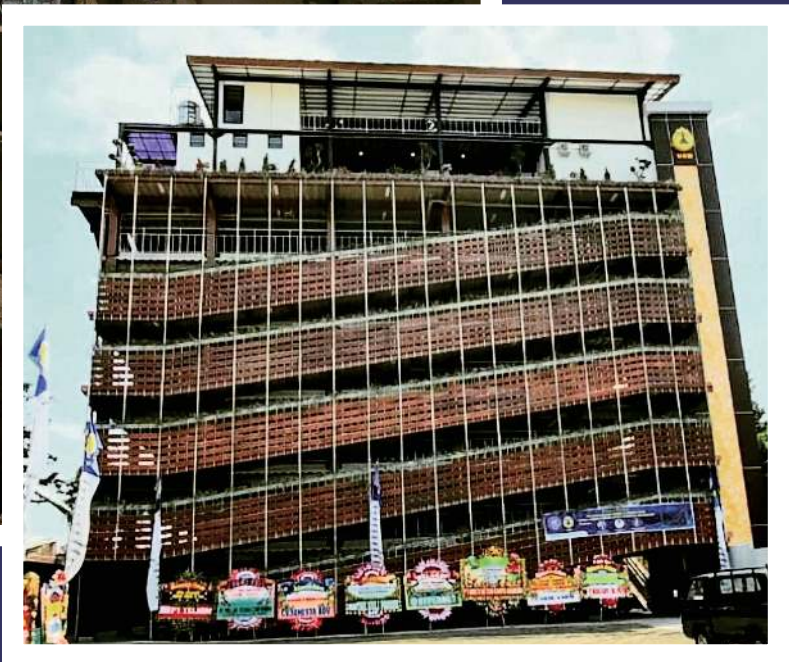




## *Construction of USM Tower Semarang University*

<i>Start</i>	<i>: 29 May 2019</i>
<i>End</i>	<i>: 21 September 2020</i>
<i>Location</i>	<i>: Jl. Soekarno - Hatta, Semarang, Central Java</i>
<i>Client</i>	<i>: Yayasan Universitas Diponegoro Semarang</i>
<i>Value</i>	<i>: estimated around US\$ 9.250.000</i>

We have completed the construction of a multi-story tower that serves as a telecommunications facility and supporting infrastructure for the area. This project reflects our commitment to quality construction, on-time completion, and high safety standards in every stage of the work.





*KEMA Merbabu  
(Glamour Camping)*





The image features a detailed architectural rendering of a building's facade, showing a series of white, curved balconies or walkways with decorative balustrades. The scene is partially obscured by a large, stylized geometric overlay consisting of a dark blue triangle in the upper right and a red triangle in the lower right, meeting at a diagonal line. The overall aesthetic is modern and professional.

*Portofolio PT. MKTP*

# *DESIGN BUILDING*



*The Rich Jogja Hotel  
(2010)*





*Jogja City Mall  
(2013)*





*D'Salvatore Art & Boutique Hotel - Yogyakarta  
(2015)*





*D'Senopati Hotel - Yogyakarta  
(2016)*



# *PT. Megah Karya Tika Pratama*

## *Projects*

NO	PROJECT NAME	PROJECT OWNER
1	DI. Watu Jagir	Dinas PSDA Prov Jateng
2	DI. Kedungwaru	Dinas PSDA Prov Jateng
3	Construction of the Office Yard Fence	Dinas PSDA Prov Jateng
4	DI. Loning Kragilan	Dinas PSDA Prov Jateng
5	Construction of Klante at Rawa Pening	Dinas PSDA Prov Jateng
6	Work including the replacement, repair, dismantling, creation, and installation of one water channel unit discharging into the wetland.	PT. Perkebunan Nusantara IX (Persero)
7	Embung Triharjo	Dinas PSDA Prov Jateng
8	Rehabilitation of the Parking and Archives Building for (PSDA)	Dinas PSDA Prov Jateng
9	DI. Dolok	Dinas PSDA Prov Jateng
10	DI. Brodi	Dinas PSDA Prov Jateng
11	Pekerjaan Rehabilitasi dan Pembangunan SDN Petompon 01	UPTD Pendidikan Kecamatan Gajah Mungkur
12	Rehabilitation & Construction of Petompon 01 Public Elementary School.	Badan Kepegawaian Daerah Provinsi Jateng
13	Expansion of the Archive Room Reorganization of Tanjung Samsat Office.	Dinas Pendapatan dan Pengelolaan Aset Daerah Prov Jateng
14	Phase 2 Factory Construction Project for PT. Nuclear Coating Fabric.	PT. Nuclear Coating Fabric
15	Construction of the Lab Room, Machine Room, and Knitting Division Walls for PT. Nuclear Coating Fabric.	PT. Nuclear Coating Fabric

# *PT. Megah Karya Tika Pratama*

## *Projects*

NO	PROJECT NAME	PROJECT OWNER
16	Repair of the Galvalume Roof for the Convention Hall - Cinemaxx at Pasific Mall Tegal	PT. Sri Tanaya Megatam
17	Over-Water Formwork for the Musi IV Bridge Construction Project, Palembang	PT. Adhi Karya (Persero)
18	Construction of a Factory Access Road using Concrete for Nuclear Coating Fabric	PT. Nuclear Coating Fabric
19	Phase 3 Factory Construction Project for PT. Nuclear Coating Fabric	PT. Nuclear Coating Fabric
20	Construction of a Parking Building and Basketball Court for Semarang University	Yayasan Alumni Universitas Diponegoro
21	Construction of the USM Tower Building for Semarang University	Yayasan Alumni Universitas Diponegoro
22	Phase 2 Factory Construction Project for PT. Nuclear Coating Fabric	PT. Nuclear Coating Fabric
23	Construction of the Development Center Building for PT. Apparel One Indonesia	PT. Apparel One Indonesia
24	Construction of Rest Area KM 319B for PT. Rosalia Indah Mitra Sentosa	PT. Rosalia Indah Mitra Sentosa
25	CY-3 Pipeline Project	PT. Nindya Karya
26	The Proposed Construction And Completion Of Shore Protection At Jalan Talkandha	PT. Kawasan Industri Kendal
27	Construction of a Production Area and Supporting Facilities for PT. Agrinesia Raya	PT. Agrinesia Raya

# *PT. Megah Karya Tika Pratama*

## *Ongoing Projects*

NO	PROJECT NAME	PROJECT OWNER
1	TLB Cisèm 2 Pipeline Project	KSO PT. Timas Suplindo – PT. Pratiwi Putri Sulung
2	TLB CB 3 Pipeline Project	KSO PT. Hutama Karya – PT. Timas Suplindo



# PT. Megah Karya Tika Pratama

## Equipment

NO	EQUIPMENT NAME	YEAR OF MANUFACTURE	TYPE	LOACTION	QTY
1	Excavator (Komatsu) C73067	2013	PC-200	Semarang	1 Unit
2	Excavator (Komatsu) C70341	2012	PC-200	Semarang	1 Unit
3	Excavator (Caterpillar)	2022	PC-75	Semarang	1 Unit
4	Excavator (Sany)	2022	PC-75	Semarang	1 Unit
5	Bulldozer (Komatsu) D31P-18	2004	70 Hp	Semarang	1 Unit
6	Vibratory Roller (XGMA)	2016	14000 kg	Semarang	1 Unit
7	Concrete Mixer	2010	0.5 m3	Semarang	10 Unit
8	Water Pump (Sinitzu) & Water Pump (RRT)	2020 & 2010	PC 2686'	Semarang	8 Unit
9	Theodolite (Topcon DT-205L)	2019		Semarang	2 Unit
10	Total Station (Topcon GM-52)	2019		Semarang	2 Unit
11	Waterpass (Topcon ATB-4A)	2019		Semarang	1 Unit
12	Generator Set	2010	12 Kva	Semarang	2 Unit
13	Air Compressor	2010		Semarang	1 Unit
14	Stamper (Vipac)	2010		Semarang	6 Unit
15	Concrete Hoist	2020	0.8 m3	Semarang	1 Unit
16	Concrete Vibrator (FU5Z/200)	2019		Semarang	6 Unit
17	Bar Cutter	2019		Semarang	1 Unit
18	Bar Bender	2019		Semarang	1 Unit
19	Pick Up Truck			Semarang	3 Unit
20	Dump Truck			Semarang	4 Unit

# *PT. Megah Karya Tika Pratama Heavy Equipment*



PT. Megah Karya Tika Pratama (MKTP) is a trusted construction company in Indonesia. We focus on providing the best construction services for our clients. From roads to buildings, we ensure quality, safety, and timely completion. Our goal is to make our clients happy and build lasting relationships through our reliable and efficient services.

## PT. MKTP Client



GRAND BATANG CITY  
*Beyond Industrial Estate*

---

*And Many More*



**PT. MEGAH KARYA  
TIKA PRATAMA**

# WE PROVIDE BEST CONSTRUCTION

TRUSTED • DEDICATED • INNOVATED

SCAN ME



DESIGN & BUILD | GENERAL CONTRACTOR | ENGINEERING

Visit Our Official Website



**PT. MEGAH KARYA TIKA PRATAMA**